



Universität Hamburg
DER FORSCHUNG | DER LEHRE | DER BILDUNG



International Conference of Sign Language Teachers
Prague, the Czech Republic, 18th – 20th October 2013

eLCA

A Tool to Understand and Practise Constructed Action Types



Prof. Dr. Renate Fischer and Simon Kollien,
University of Hamburg

VerfasserInnen:
Renate Fischer und Simon Kollien

Introduction to Constructed Action (CA) 1

Examples and explanation of

- CA vs. lexeme
- pure CA vs. parallelised CA
- connection to L2 learners' problems

Introduction to Constructed Action (CA) 1a

CA vs. Lexeme

GSL: ANFÄNGER (english: beginner)



Renate Fischer and Simon Kollien

Introduction to Constructed Action (CA) 1b

pure CA vs. parallelised CA

boss



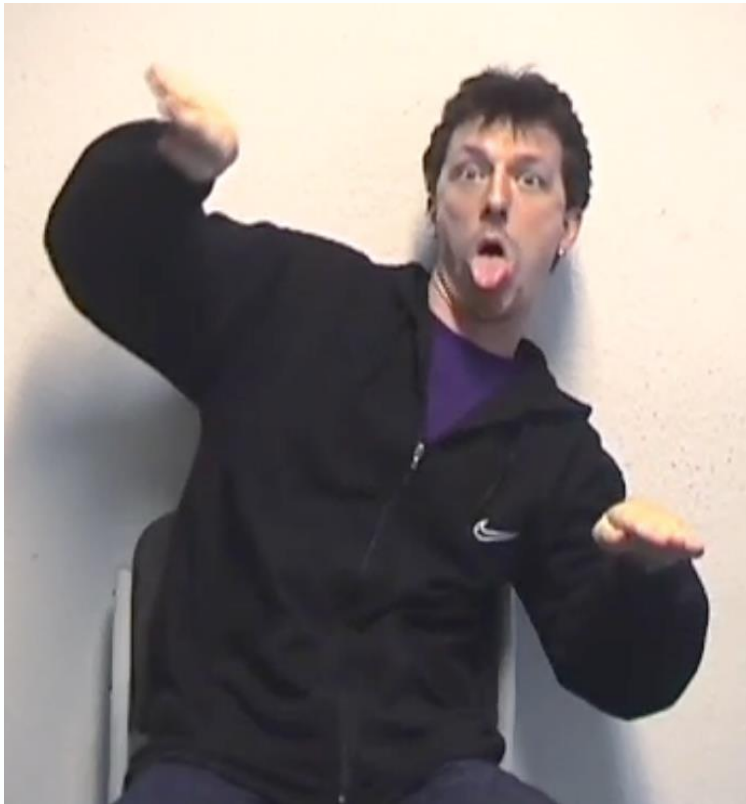
apprentice



Renate Fischer and Simon Kollien

Introduction to Constructed Action (CA) 1c

More types of parallelised CA



Introduction to Constructed Action (CA) 2

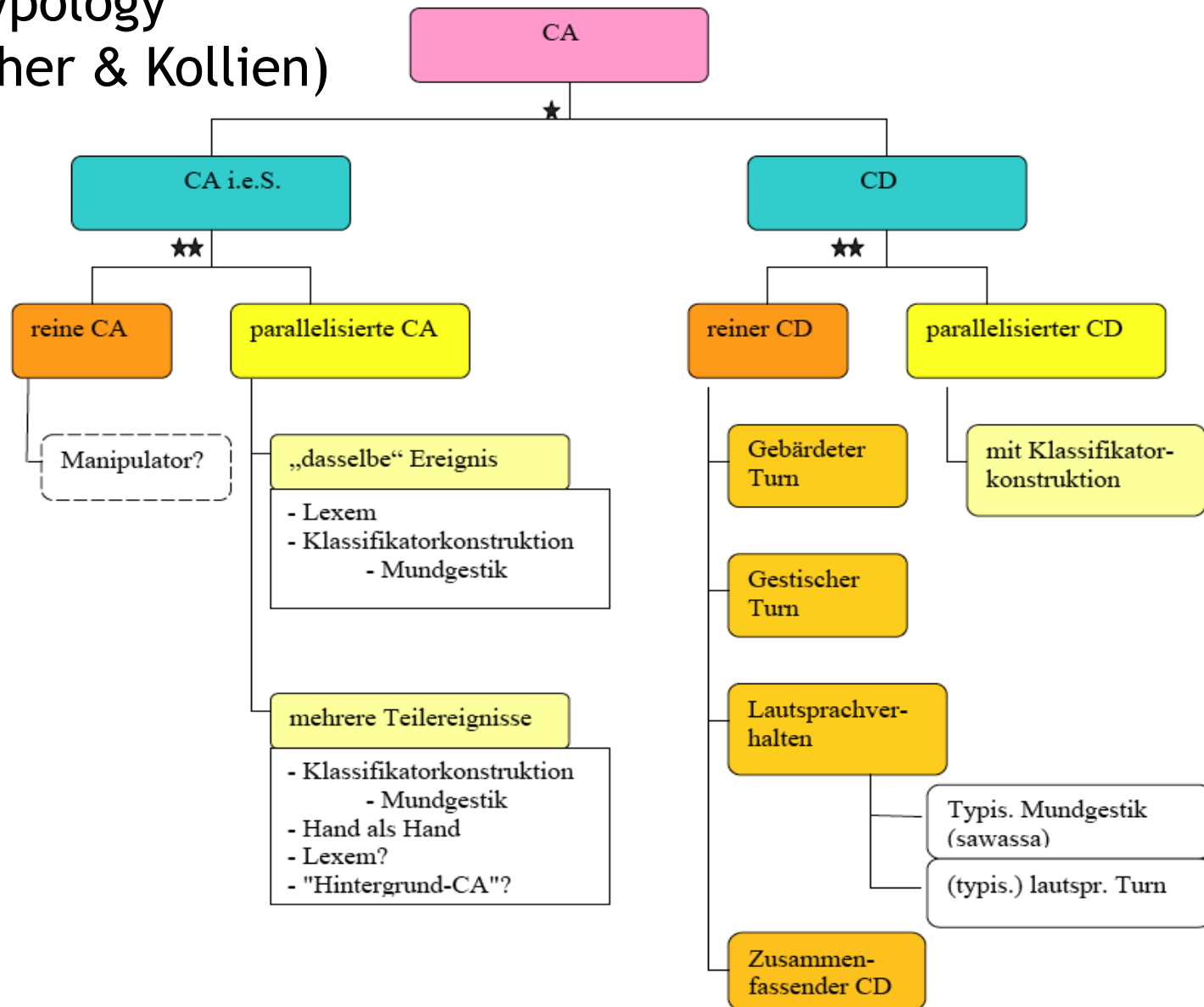
Previous term: Role Shift

-> new: Constructed Action (Tannen > Metzger)

Research on CA

- Mental Space Theory (Liddell)
- Highly Iconic Structure (Cuxac)
- Body Partitioning (Dudis)
- Obligatory? Necessary! (Quinto-Pozos)
- Types of CA & subcategories (Fischer & Kollien)

CA typology (Fischer & Kollien)

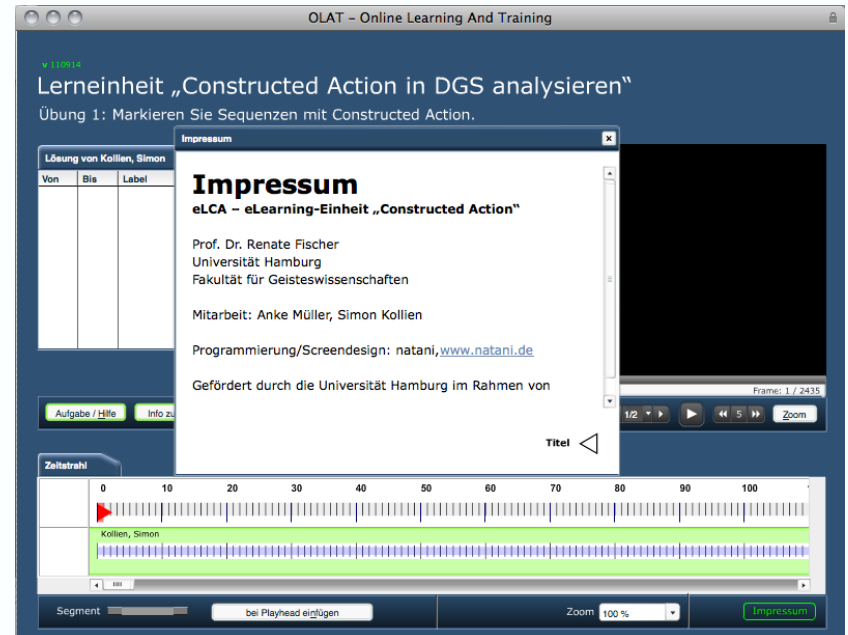


eLCA

eLearning & CA

a project
for the development
of electronic devices
for the teaching-learning
of CA

directed by Renate Fischer,
collab. Anke Müller and Simon Kollien



eLCA

Goals

- Enhancing understanding of CA in fluent discourse
- Advancing the meta-linguistic skills regarding CA (language awareness)
- Giving feedback to the students' understanding of CA

eLCA

consists of 2 practise units

- Unit 1: chronological depiction
- Unit 2: referential structure and embodiment

Unit
1

v.111024

Übung 1: Markieren Sie Sequenzen mit Constructed Action.

Lösung von Musterlösung				
Von	Bis	Label	Farbe	Steuerung
32	43	CD (zus.fassend)	■	⏮ ⏭ ⏩ ⏹
88	99	CD (LS)	■	⏮ ⏭ ⏩ ⏹
154	171	CD (zus.fassend)	■	⏮ ⏭ ⏩ ⏹
193	200	CD (Kommunikationsverb)	■	⏮ ⏭ ⏩ ⏹
224	231	CD	■	⏮ ⏭ ⏩ ⏹
248	261	CD (Kommunikationsverb)	■	⏮ ⏭ ⏩ ⏹

Aufgabe / Hilfe

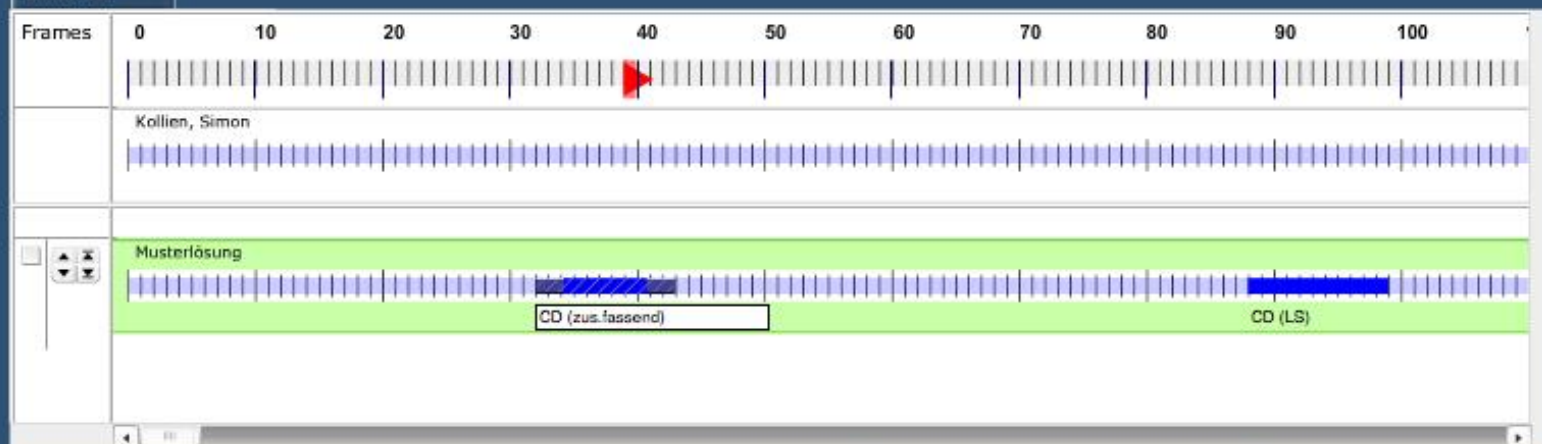
Info zum Film

Übersetzung

Segment

bei Frame 39 einfügen

Zeitstrahl



top

FPS: 3.4-- Frame: 39 / 2435



Zoom

Zoom 100 %

Impressum

eLCA Unit 1

chronological depiction

- identify instances and duration of CA on the measuring line
- categorise and label the CA items
- compare with model solution
- feedback about learners' errors

v.111024

CA 3 / 22 Standbild F-0467

Szene mit Referenten

Lösungsübersicht Referenten/Artikulatoren

Aufgabe / Hilfe

Toolbox

Film

Sichern

Navigation

◀ 3 ▶

3: CA-467

Toolbox

Artikulatoren

Referenten



Label Lehrer

Schreibwerkz.
Tafel

Lehrer



typ. SchülerIn

Impressum

eLCA Unit 2

referential structure and embodiment

- relate referents to body parts
- analyse and segment parallelised CA
- compare with model solution
- feedback about learners' errors

eLCA

in the signing class

Both units offer multiple didactic opportunities

- blended learning for each learner
- individual work, team work, classroom work
- differentiation of complexity levels according to students

- precise retrieval of CA sequences in the film
- observing authentic signed discourse

- Error analysis
(didactics and research: our study is in progress)

eLCA

potential for contrastive analyses

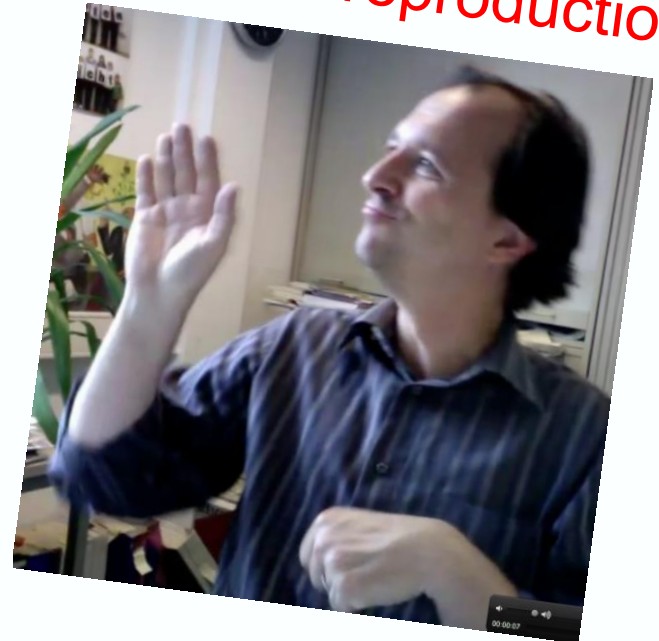
- comparison with authentic German narration
- comparison with voiced German version of signed narration
- comparison with signed variants
- reflection of typological characteristics (crosslinguistics)

eLCA contrastive analyses

original sequence



erroneous reproduction



voiced version

SIGNER 9 Unser Lehrer hat immer gesagt „es muss alles stimmen“. Und einmal ist es passiert, dass mein Bruder, der älteste von uns Dreien, mit meinem Vater, mit dem Fahrrad von Königsberg nach, wie heißt es noch, Cranz gefahren ist. Ein Ostseebad, das

contact:

Renate.Fischer@uni-hamburg.de

Simon.Kollien@uni-hamburg.de